

Film pictured: *Nathan's Kingdom*

marlene
meyerson jcc
manhattan THE CAROLE ZABAR CENTER FOR FILM

11TH ANNUAL
REELAbilities
FILM FESTIVAL

Presented by the Marlene Meyerson JCC Manhattan, the **11th Annual ReelAbilities Film Festival: New York** is dedicated to promoting awareness and appreciation of the lives, stories, and artistic expressions of people with different abilities. The festival presents award-winning films in various locations throughout the NY metropolitan area. Discussions and other engaging programs bring the community together to explore, discuss, and celebrate the diversity of our shared human experience.

REELAbILITIES.ORG/NEWYORK

APRIL 2-9
2019

ReelAbilities
FILM FESTIVAL
NEW YORK



OPENING NIGHT GALA



MOONLIGHT SONATA: DEAFNESS IN THREE MOVEMENTS

Dir. Irene Taylor Brodsky | US | 90 min | Documentary

The stories of Jonas, a boy born with genetic deafness who grew up with cochlear implants, and his aging deaf grandfather, who debates the use of this technology. Both at turning points in their lives, they set forth on an intergenerational journey which explores silence, deafness, and Beethoven's legendary composition written the year that he became deaf. Premiered at Sundance 2019 and produced by HBO. Screening preceded by red carpet at 6:30 pm. Screening followed by reception.

Tue, Apr 2, 7 pm | Marlene Meyerson JCC Manhattan

OPENING + CLOSING NIGHT LEADERSHIP

Lynn Bartner-Wiesel + Elisha Wiesel, co-chairs

Michelle + Jeff Feig, co-chairs

Jordana + David Manzano, advisory council chairs

CLOSING NIGHT GALA



THE DRUMMER AND THE KEEPER

Dir. Nick Kelly | Ireland | 93 min | Narrative

Gabriel is a drummer in a promising band, desperate to hide his bipolar diagnosis from his exasperated bandmates. At a therapeutic mixed-ability soccer game he's obliged to attend, Gabriel meets Christopher, a teenager with Asperger's Syndrome, and the two are forced to "make friends." Screening preceded by reception and red carpet starting at 6 pm.

Tue, Apr 9, 7 pm | IAC Building | Copresented with Vimeo

ADDITIONAL SCREENINGS:

Wed, Apr 3, 5 pm | Lehman College

Sat, Apr 6, 3 pm | NYPL: Mid-Manhattan Library at 42nd Street

Sun, Apr 7, 3 pm | Cinema Arts Centre

Mon, Apr 8, 5 pm | St. John's University



AMÉRICA

Dir. Erick Stoll + Chase Whiteside | US | 75 min | Documentary

Diego, a young circus artist, returns home and reunites with his brothers after their grandmother, América, falls from her bed. Diego is a dreamer who sees poetry and purpose in this tragedy. His dream of familial cohesion fades into reality as the brothers clash over money, communication, and the challenge of caring for América.

Wed, Apr 3, 7 pm | Maysles Documentary Center

Thu, Apr 4, 7:15 pm | Lehman College

Sat, Apr 6, 8:30 pm | Marlene Meyerson JCC Manhattan

Sun, Apr 7, 4:30 pm | Museum of the Moving Image



CRAZY

Dir. Lise Zumwalt

US | 60 min | Documentary

A young man diagnosed with schizophrenia decides to go off his medication, fearing that side effects will override the drugs' benefits. A powerful human drama that challenges perceptions about treating mental illness.

Thu, Apr 4, 6 pm | NYPL: Mid-Manhattan Library at 42nd Street

Fri, Apr 5, 1 pm | Bellevue Hospital

Sat, Apr 6, 2 pm | NYPL: Webster Library

Sun, Apr 7, 8:30 pm |

Marlene Meyerson JCC Manhattan



GURRUMUL

Dir. Paul Damien Williams

Australia | 96 min | Documentary

A portrait of world music phenomenon Geoffrey Gurrumul Yunupingu, a blind indigenous artist on the brink of international reverence. Possessing a deep reserve of musical talent, he struggles with balancing his personal life and keeping the show on the road.

Wed, Apr 3, 5 pm | NYU Center for Disability Studies

Wed, Apr 3, 7 pm | Nitehawk Cinema Williamsburg

Fri, Apr 5, 7 pm | Maysles Documentary Center

Thu, Apr 4, 5:30 pm | Lehman College

Mon, Apr 8, 8:30 pm | Marlene Meyerson JCC Manhattan



HEARTS OF GLASS—A VERTICAL FARM TAKES ROOT IN WYOMING

EAST COAST PREMIERE

Dir. Jennifer Tennican
US | 68 min | Documentary

This film follows the tumultuous first 15 months of the operating of Vertical Harves a state-of-the-art hydroponic greenhouse that provides local crops as well as employment for people with disabilities. Plants and people grow together in this intimate portrait of innovation, inclusion, and community.

Wed, Apr 3,
1 pm + 4 pm | The Viscardi Center

Wed, Apr 3, 7:15 pm | Lehman College

Sat, Apr 6, 6:30 pm |
Marlene Meyerson JCC Manhattan

Mon, Apr 8, 12:30 pm |
St. John's University



INTELLIGENT LIVES

Dir. Dan Habib
USA | 72 min | Documentary

Three pioneering young American adults with intellectual disabilities challenge perceptions of intelligence as they navigate education and the workforce. The film challenges what it means to be intelligent, and points to a future in which people of all abilities can fully participate in higher education, meaningful employment, and intimate relationships.

Sun, Apr 7, 10 am | Commonpoint Queens

Sun, Apr 7, noon | Cinema Arts Centre

Sun, Apr 7, 4:30 pm |
Marlene Meyerson JCC Manhattan

Mon, Apr 8, 7:30 pm | Lincoln Center



ME, MY MOUTH, AND I

INTERNATIONAL PREMIERE

Dir. Sophie Robinson
UK | 59 min | Documentary

The journey of an actress with Tourette syndrome and her exploration of neurodiversity. Artist, activist, and performer Jess Thom asks novel questions about the portrayal of disability in the arts and the exclusion of people with disabilities as cultural and creative producers.

Wed, Apr 3, 6:15 pm |
Marlene Meyerson JCC Manhattan

Thu, Apr 4, 2 pm | NYPL Webster Library

Thu, Apr 4, 4 pm | NYPL: Mid-Manhattan
Library at 42nd Street



NATHAN'S KINGDOM

EAST COAST PREMIERE

Dir. Olicer Muñoz
US | 98 min | Narrative

A dark fantasy drama about Nathan, a young man with autism, and his sister Laura, who has an addiction. Rather than surrender to social services, they risk it all, battling monsters and enduring mythical wars in the hope of finding a fictitious kingdom to potentially transform their lives forever.

Thu, Apr 4, 8:30 pm |
Marlene Meyerson JCC Manhattan

Fri, Apr 5, 7 pm | Rivertown Film Society,
Copresented with JCC Rockland



SUICIDE: THE RIPPLE EFFECT

Dir. Kevin Hines + Greg Dicharry
US | 95 min | Documentary

At age 19, Kevin Hines attempted to take his own life by jumping from the Golden Gate Bridge. Seventeen years later, he still struggles with many of the same symptoms that led him to attempt suicide, but he is on a mission to use his story to help others stay alive.

Sun, Apr 7, 2 pm |
The Intrepid Sea, Air & Space Museum

Sun, Apr 7, 6:30 pm |
Marlene Meyerson JCC Manhattan

Mon, Apr 8, 7 pm | Bedford Playhouse



TAMARA AND THE LADYBUG

Dir. Lucía Carreras
Mexico, Spain | 107 min | Narrative

Tamara is a woman with a mental disability who attempts to continue her daily routine despite the disarray in her life. Tamara's fascination with ladybugs leads her out of her neighborhood and into the unknown, where she discovers a new reality.

Wed, Apr 3, 8:30 pm |
Marlene Meyerson JCC Manhattan

Sat, Apr 6, noon | NYPL: Mid-Manhattan
Library at 42nd Street



THE R-WORD EAST COAST PREMIERE

Dir. Amanda Lukoff
US | 66 min | Documentary

The inappropriate use of the R-word can be heard every day, and continues to marginalize a population of people. This film confronts how, when, and why the R-word became so present in our culture, illustrates who it impacts, and ultimately makes the case for changing the conversation around people with intellectual and developmental disabilities.

Fri, Apr 5, 1 pm | NYPL: Webster Library

Mon, Apr 8, 6:15 pm |
Marlene Meyerson JCC Manhattan

Mon, Apr 8, 7 pm | Gural JCC



WILD PRAIRIE ROSE NEW YORK PREMIERE

Dir. Deborah LaVine
US | 91 min | Narrative

In 1952, Rose Miller returns to her rural hometown to care for her ailing mother. When Rose decides to embark on a filmmaking project in her local community, she is enchanted by a local man who is deaf, and must decide if she has the courage to follow her heart.

Wed, Apr 3, 7:30 pm | Gold Coast

Thu, Apr 4, 6:15 pm |
Marlene Meyerson JCC Manhattan



ACT NATURAL | PREMIERE

Dir. Luca Fox
Australia | 4 min | Narrative
A battle occurs in the mind of a young man with high-functioning autism as he engages in everyday conversation.



CODA

Dir. Erika Davis-Marsh
US | 22 min | Narrative
A young dancer struggles with her identity and growing up hearing in a deaf family.



DESCENT: IN PROCESS

Dir. Chris Cameron
US | 7 min | Documentary
Three artists create a multimedia dance performance that amplifies the joy of wheeled movement.



HAIR TRIGGER

Dir. Taylor Schafer
US | 9 min | Narrative
School shooting survivor Sadie struggles the night before the rest of Sadie's classmates return to school without her.



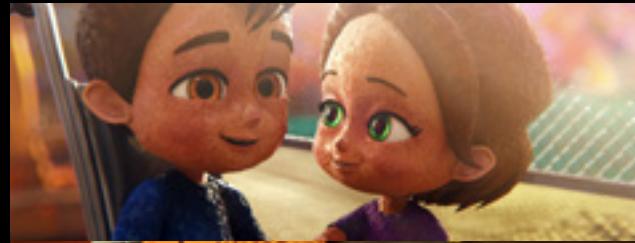
HALE

Dir. Brad Bailey
US | 21 min | Documentary
Born with cerebral palsy, Hale Zukas is the "grandfather" of the disability movement. A born activist, he wakes up every day to fight for disability rights.



HOT FLASH

Dir. Danny Woodburn
US | 9 min | Web Series
In this parody, a woman discovers that her symptoms of menopause allow her to unwittingly become a superhero.



IAN, A MOVING STORY

Dir. Abel Goldfarb
Argentina | 10 min | Narrative
Ian uses a wheelchair. All he wants is to make friends, but discrimination keeps him away from the playground.



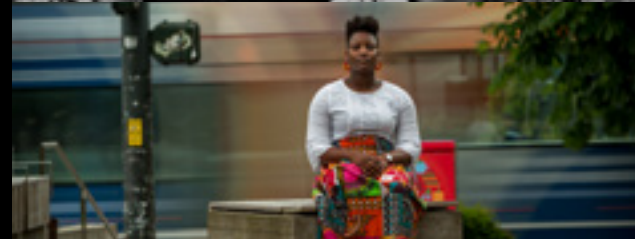
JMAXX AND THE UNIVERSAL LANGUAGE

Dir. Ryan Mayers
US | 13 min | Documentary
A teenager with autism turns to dance as a way to better express himself.



LEFTOVER

Dir. Meric Demiray
Turkey | 10 min | Narrative
A young man leaves home to join a peace rally. On his way, he starts to experience strange occurrences.



LITTLE REBEL

Dir. Aimie Vallat + Guido Ronge
US | 10 min | Documentary
Isatou Jallow, a woman from The Gambia living in Seattle, advocates for women, asylees, and people with disabilities.



LIVING ART

Dir. David Rockkind
US | 32 min | Documentary
The story of a young woman living with Familial Dysautonomia, whose art became her stunning and profound means of communication and livelihood.



MAPPING THE DISABILITY TRAP

Dir. Jason DaSilva
US | 14 min | Documentary
Filmmaker Jason DaSilva encounters a health care crisis as he tries to be closer to his son, who lives 2,000 miles away.



THE MATCHMAKER

Dir. Leonora Pitts
US | 12 min | Narrative
Sam is concerned that his aging mother lacks the social stimulation that he believes will stave off Alzheimer's. He decides to find her a new best friend.



ON THE SPECTRUM

Dir. Yuval Shafferman
Created by Dana Idisis + Yuval Shafferman
Israel | 26 min | Series
Three roommates in their twenties, all on the autism spectrum, share an apartment while learning to contend with the world around them.



PANIC ATTACKI

Dir. Eileen O'Meara
US | 3 min | Narrative
A woman wonders if she left the coffee machine on, causing her to slowly fall into a pit of anxiety and obsession and lose hold on reality.



SHAKESPEARE IN TOKYO

Dir. Genevieve Clay-Smith
Australia, Japan | 21 min | Narrative
A Shakespeare fan with Down syndrome sets off on a solo adventure to discover Tokyo and to prove his independence.



SHAKE WITH ME

Dir. Zack Grant
US | 33 min | Documentary
Debra Magid is an artist living with, and growing through, Parkinson's Disease. Her art, health, and family bring her will to triumph.



THE SIBLINGS LIEBENCRA NTZ

Dir. Jonathan Johnson
US | 5 min | Narrative
In the Minimalist Café in Brooklyn, you'll find four siblings searching for something: to be the next YouTube sensation.



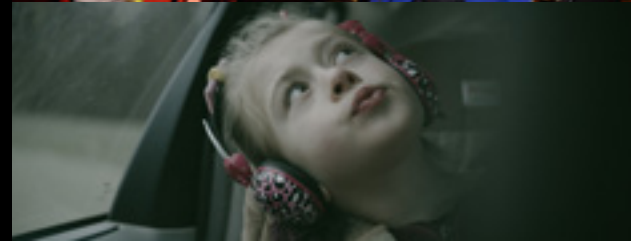
TAKE ME TO THE WAVES

Dir. Jake Taylor Kipping + Tom Stoker
UK | 20 min | Narrative
When Clementine shares her romantic feelings toward her caregiver, she must face the complications that exist.



THRIVE

Dir. Paul Szyon
US | 14 min | Documentary
A look at the prodigious talent and irrepressible spirit of a musically precocious 12-year-old blind piano player.



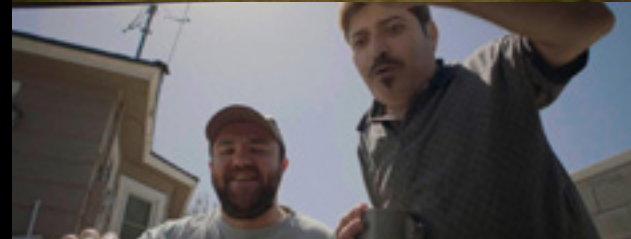
THE UNCONDITIONAL

Dir. Dave Adams
US | 30 min | Documentary
An unflinching look into the lives of two undiagnosed children with disabilities and their parents as they try to navigate reality.



UNTEACHABLE

Dir. Anthony Sherin
US | 11 min | Documentary
Daniel looks back on his childhood of being unable to read and the moment he met a teacher who changed everything.



VISIBILITY

Dir. Keenan O'Reilly
US | 5 min | Narrative
A dynamic duo hatches a bird-brained scheme to supplement their income.

PROGRAM UPDATES, ADDITIONAL INFORMATION, + TICKETS:

REELABILITIES.ORG/NEWYORK

646.505.5708 | TTY 877.505.6708



Panel discussion during ReelAbilities 2017



Heidi Latsky Dance Group

LIGHTS! CAMERA! ACCESS! 2.0

Lights! Camera! Access! 2.0 (LCA 2.0) is proud to collaborate with ReelAbilities to present resume review, speed interviews, workshops, flash mentoring, and networking designed for aspiring filmmakers and media professionals with disabilities. LCA 2.0 addresses underrepresentation of disabilities in media to increase employment, improve authentic disability-inclusive diversity portrayals, and expand accessible media.

Wed, Apr 3 | Marlene Meyerson JCC Manhattan

SHABBAT DINNER | MOVIE | CONVERSATION CELEBRATING ADVOCACY

Honoring Lawrence Carter-Long

ReelAbilities celebrates advocacy and honors those individuals who lead the way toward greater inclusion and accessibility. Join us for a lively Shabbat dinner and a screening of several short films relating to activism as we honor the inspiring work of one of our founding collaborators, Lawrence Carter-Long.

Fri, Apr 5, 6:30 pm | Marlene Meyerson JCC Manhattan
Advance registration required.

FOR INFORMATION + TICKETS VISIT [REELABILITIES.ORG/NEWYORK/EVENTS](https://reelabilities.org/newyork/events)

REELABILITIES R&R COMMUNITY DAY

Bring the whole family to the JCC for hands-on exploration and activities inspired by the festival. Programs will include: Heidi Latsky Dance—On Display, NYC Kids Project Puppet Show, Action Play theater, Panel discussions, Partner activities and tables, and much more... Look online for full schedule of events.

Sat, Apr 6, 2-6 pm | Marlene Meyerson JCC Manhattan

PANEL | WRITING DISABILITY

The visions presented in media help shape our society. From Archie Comics to children's TV shows, we are witnessing exciting new examples of inclusion in media. Join us for a panel and presentations of creators who are furthering diversity in multiple forms of media. *In Partnership with WGA-East*

Sat, Apr 6, 3 pm | Marlene Meyerson JCC Manhattan

PANEL | FASHION BEYOND FUNCTION IDEALS OF BEAUTY, DESIGN, AND DISABILITY

Brand ambassadors, designers, and industry pioneers gather in conversation to explore the development of fashion for people with disabilities, representation, and the business case for engaging with inclusive design. The panel will also discuss the shift in approach from focus on function to self-expression.

Sat, Apr 6, 5 pm | Cooper Hewitt Smithsonian Design Museum

SPECIAL EVENTS



Comedy Night hosted by Danny Woodburn

REELABILITIES COMEDY NIGHT

An evening of laughs brought to you by top comedians revealing the entire truth about comedy and disability. Hosted by Danny Woodburn.

DISABILITY ON THE SMALL SCREEN

TV and web series have opened up new platforms for accessible presentations of people with disabilities. Enjoy a screening featuring groundbreaking shows, including *On the Spectrum* and *Hot Flash*, which spotlight people with disabilities, followed by a discussion with the filmmakers and industry experts. In partnership with SAG-AFTRA.

Sun, Apr 7, 2:30 pm | Marlene Meyerson JCC Manhattan

"TEARLESS" ART EXHIBIT

Featuring five young adult artists who have Familial Dysautonomia (including Mara Clawson, subject of the film *Living Art*).

Sun, Apr 7, 4-7 pm | Allouche Gallery

DAYTIME EDUCATIONAL SCREENING PROGRAM

Throughout the run of the festival, ReelAbilities provides FREE screenings (followed by moderated conversations) of select films to schools and educators in the JCC's theater. We welcome all schools to take advantage of this special initiative.

For more information, contact reelabilities@jccmanhattan.org.

MORE SPECIAL EVENTS, PROGRAM UPDATES, ADDITIONAL INFORMATION + TICKETS LISTED ONLINE:
REELABILITIES.ORG/NEWYORK

VENUES + SCHEDULE

MANHATTAN

Marlene Meyerson JCC Manhattan

334 Amsterdam Avenue
New York, NY 10023
646.505.5708 | TTY 877.505.6708

TUE, APR 2

7 pm | **Opening Night Gala** | Moonlight Sonata: Deafness in Three Movements

WED, APR 3

6:15 pm | Me, My Mouth, and I

8:30 pm | Tamara and the Ladybug

THU, APR 4

6:15 pm | Wild Prairie Rose

8:30 pm | Nathan's Kingdom

FRI, APR 5

6:30 pm | **Shabbat Dinner** | **Movie** | **Conversation** | **Advocacy in Action** | Hale | Little Rebel | Mapping the Disability Trap

SAT, APR 6

12:30 pm | **Reel Shorts: Art**
Living Art | Shake with Me | Thrive

2-6 pm | **ReelAbilities R&R Community Day**

2:30 pm | **Reel Shorts: Dance + Performance**
Coda | Descent: In Process | Jmaxx and the Universal Language

3 pm | **Panel** | **Writing Disability**

4:30 pm | **Reel Shorts 1** | Act Natural | Ian | The Matchmaker | Panic Attack! | Shakespeare in Tokyo | Visibility

6:30 pm | Hearts of Glass

8:30 pm | América

SUN, APR 7

12:30 pm | **Reel Shorts 2** | Hair Trigger | Leftover | The Siblings Liebenkrantz | Take Me to the Waves | Unteachable | The Unconditional

2:30 pm | **Disability on the Small Screen** | On the Spectrum | Hot Flash

4:30 pm | Intelligent Lives

6:30 pm | Suicide: The Ripple Effect

8:30 pm | Crazy

MON, APR 8

6:15 pm | The R-Word

8:30 pm | Gurrumul

IAC Building

555 W 18th St.
New York, NY 10011

TUE, APR 9

7 pm | **Closing Night Gala** | The Drummer and the Keeper | *Copresented with Vimeo*
Preceded by Closing Night Reception at 6 pm

Allouche Gallery

82 Gansevoort St.
New York, NY 10014 | 212.966.6675

SUN, APR 7

4-7 pm | "Tearless" Art Exhibit

Bellevue Hospital

468 First Ave.
New York, NY 10016 | 212.998.3759

FRI, APR 5

1:30 pm | Crazy

Cooper Hewitt Smithsonian Design Museum

2 E 91st St.
New York, NY 10128 | 212.849.2950

SAT, APR 6
5 pm | Panel | Fashion Beyond Function |
Ideals of Beauty, Design, and Disability

Intrepid Sea, Air & Space Museum

Pier 86, W 46th St. + 12th Ave.
New York, NY 10036 | 646.381.5158

SUN, APR 7
2 pm | Suicide: The Ripple Effect

Lincoln Center for the Performing Arts (Atrium)

61 W 62nd St.
New York, NY 10023 | 212.875.5375

MON, APR 8
7:30 pm | Intelligent Lives

Maysles Documentary Center

343 Malcolm X Blvd.
New York, NY 10027 | 212.537.6843

WED, APR 3
7 pm | América | *Preceded by* Little Rebel

FRI, APR 5
7 pm | Gurrumul

NYPL: Webster Library
1465 York Ave.
New York, NY 10075 | 212.288.5049

THU, APR 4
2 pm | Me, My Mouth, and I

FRI, APR 5
1 pm | The R-Word

SAT, APR 6
2 pm | Crazy

3:45 pm | Coda

MON, APR 8
1:30 pm | Leftover | Living Art

**NYPL: Mid Manhattan
Library at 42nd Street**
476 Fifth Avenue (42nd St. entrance)
New York, NY 10018 | 212.340.0873

THU, APR 4
1 pm | Jmaxx and the Universal Language |
Act Natural | Little Rebel | Coda

4 pm | Me, My Mouth, and I

6 pm | Crazy

SAT, APR 6
Noon | Tamara and the Ladybug

3 pm | The Drummer and the Keeper

**TISCH School of the Arts
NYU Center for Disability Studies**
721 Broadway, Room 006
New York, NY 10003 | 212.998.8558

WED, APR 3
5 pm | Gurrumul

BROOKLYN

BRIC
647 Fulton St.
Brooklyn, NY 11217 | 718.855.7882

MON, APR 8
7 pm | Jmaxx and the Universal Language |
Thrive | Shake with Me

Nitehawk Cinema Williamsburg
136 Metropolitan Ave.
Brooklyn, NY 11249 | 718.782.8370

WED, APR 3
7 pm | Gurrumul

BRONX

Lehman College
Music Building, East Dining Room
250 Bedford Park Blvd. W
Bronx, NY 10468 | 718.960.8441

WED, APR 3
4 pm | Act Natural | Coda | Unteachable
5 pm | The Drummer and the Keeper

7:15 pm | Hearts of Glass

THU, APR 4
4 pm | Shakespeare in Tokyo |
Little Rebel | Descent: In Process | Jmaxx
and the Universal Language

5:30 pm | Gurrumul

7:15 pm | América

QUEENS

Commonpoint Queens
67-09 108th St.
Forest Hills, NY 11375 | 718.268.5011

SUN, APR 7
10 am | Intelligent Lives

1 pm | Unteachable

1:30 pm | Act Natural

2 pm | Jmaxx and the Universal Language

2:30 pm | Hale

MON, APR 8
1 pm | Shake with Me

1:30 pm | Hale

TUE, APR 9
4 pm | Ian

Museum of the Moving Image
36-01 35th Ave.
Astoria, NY 11106 | 718.777.6828

SUN, APR 7
4:30 pm | América

St. John's University
8000 Utopia Parkway
Jamaica, NY 11439 | 718.990.2631

MON, APR 8
12:30 pm | Hearts of Glass

5 pm | On the Spectrum | The Drummer
and the Keeper

VENUES + SCHEDULE

STATEN ISLAND

Lifestyles Education Center

Copresented with Huguenot Park Library
884 Targee St.
Staten Island, NY 10304 | 718.981.1000

WED, APR 3

4 pm | Jmaxx and the Universal Language |
Act Natural

LONG ISLAND

Cinema Arts Centre

423 Park Ave.
Huntington, NY 11743 | 631.423.7610

SUN, APR 7

Noon | Intelligent Lives

3 pm | The Drummer and the Keeper

Marion & Aaron Gural JCC

207 Grove Ave.
Cedarhurst, NY 11516 | 516.569.6733

MON, APR 8

7 pm | The R-Word

Gold Coast

Bow Tie Squire Cinemas
113 Middle Neck Rd. | Great Neck Plaza, NY
11021 | 516.829.2570

WED, APR 3

7:30 pm | Wild Prairie Rose

The Viscardi Center

201 I. U. Willets Rd.
Albertson, NY 11507 | 516.465.1608

WED, APR 3

1 pm + 4 pm | Hearts of Glass

ROCKLAND

Rivertown Film Society

Copresented with JCC Rockland
58 Depew Ave.
Nyack, NY 10960 | 845.353.2568

FRI, APR 5

7 pm | Nathan's Kingdom

WESTCHESTER

Bedford Playhouse

633 Old Post Rd.
Bedford, NY 10506 | 914.234.6704

APR 8

7 pm | Suicide: The Ripple Effect

TICKET INFORMATION

Ticketing policies and prices vary by location. Tickets can be purchased online at reelabilities.org/newyork. To purchase tickets or register by phone, please contact the appropriate screening venue directly. The Marlene Meyerson JCC Manhattan offers group rates and discounted multiticket packs. **For more information, please visit reelabilities.org/newyork or contact the appropriate screening venue directly.**

PROGRAM UPDATES, ADDITIONAL INFORMATION, + TICKETS:

REELABILITIES.ORG/NEWYORK

646.505.5708 | TTY 877.505.6708

ALL FILMS FOLLOWED BY CONVERSATION.

ACCESSIBILITY INFORMATION

marlene
meyerson jcc
manhattan



ReelAbilities strives to include all people. ReelAbilities presents all films with open captions, and all venues are accessible to mobility devices. The main venue, Marlene Meyerson JCC Manhattan, provides ASL interpretation, CART, Audio Description, and information in braille upon advance request, and such assistance may be available at other venues as well. **Individuals requiring accommodations to participate should contact the specific screening venue directly by March 18, 2019.**

